



Installation Instructions

718190

1994-95 Chevrolet & GMC Trucks

½ or ¾ Ton LD Chassis

5.0L & 5.7L Engine 2WD/4WD

For vehicles with 2 Bolt Flange Catalytic Converter

Installation requires moderate mechanical skill. If this job is beyond your abilities, seek the services of a qualified technician.

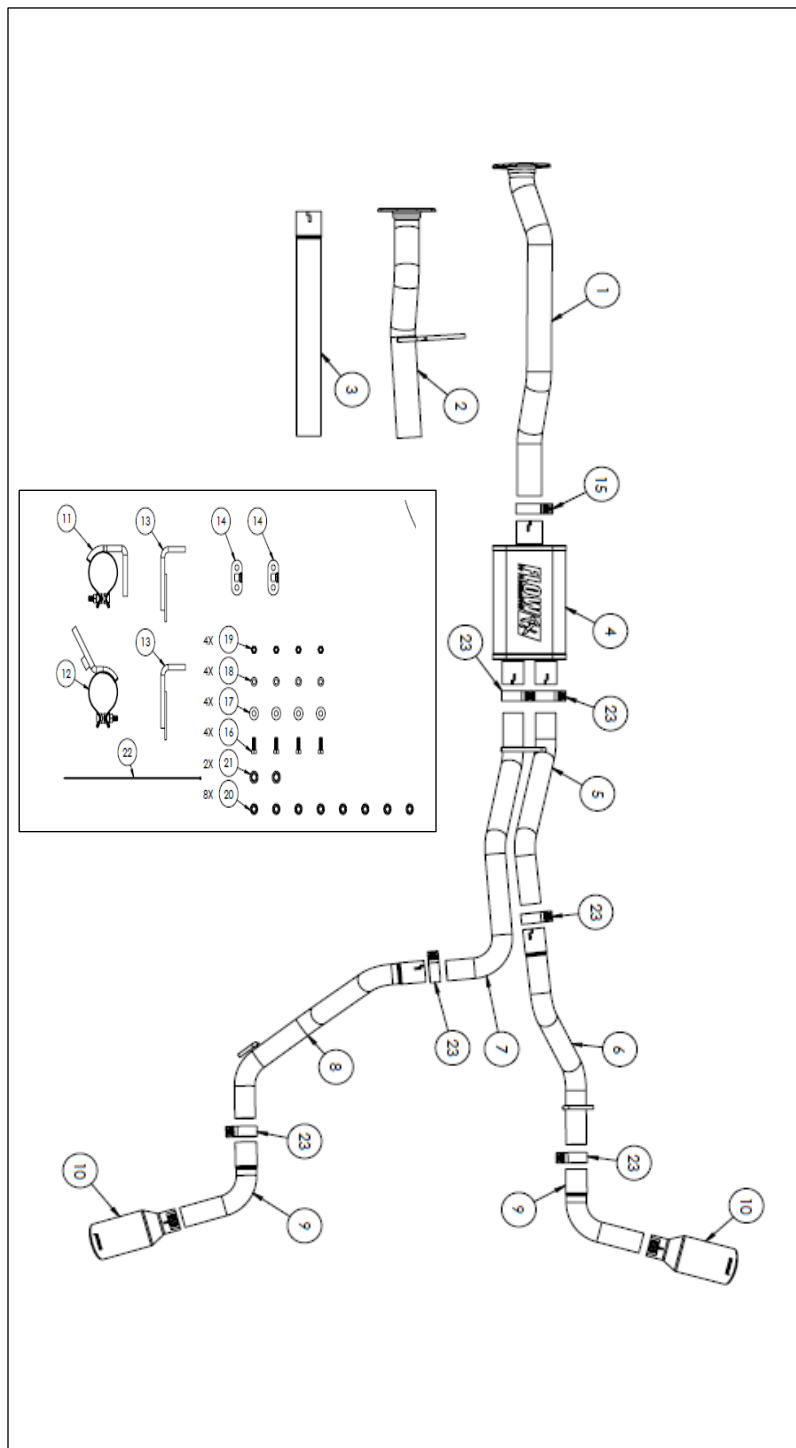
If you do not understand any part of these instructions, please call Flowmaster Technical Support at (866) 464-6553 for assistance.

Apply penetrating oil generously to clamps, fasteners, pipes, and hanger rods for ease of disassembly.

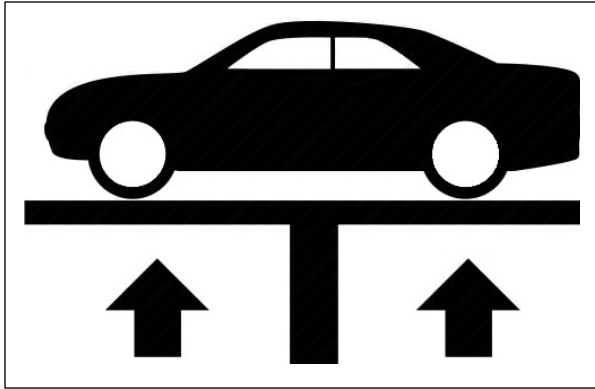
REVIEW THE INSTRUCTIONS & VERIFY THE KIT CONTENTS

Take a moment to read and understand these instructions before installing your Flowmaster exhaust kit.

ITM#	Part #	Description	Qty.
1	26979M	Inlet pipe (Long)	1
2	26980S	Inlet pipe (Short)	1
3	26981M	Extension Pipe	1
4	72198-Z	FFX Muffler	1
5	86780M	Right Muffler Outlet Pipe	1
6	86781M	Right Tail Pipe	1
7	86783M	Left Muffler Outlet Pipe	1
8	86784M	Left Tail Pipe	1
9	86782M	Side Exit Pipe	1
10	ST507B	4.5" Black ceramic tip	2
11	547HA	Muffler Clamp Hanger	1
12	546HA	Clamp Hanger	1
13	166HA	Tail Pipe Frame Hanger	2
14	HA168	Red Rubber Exhaust Hanger	2
15	MC300BS	3" Band Clamp	1
16	HW208	3/8-16 X 1" Hex Bolt	4
17	HW303	3/8 Flat Washer	4
18	HW309	3/8 Lock Washer	4
19	HW103	3/8-16 Nut	4
20	HW502	7/16" Push Nut	5
21	HW503	½" Push Nut	2
22	HW505	Cable Tie	1
23	MC250BS	2.5" Band Clamp	6



Use the parts drawing and list to identify components and verify your kit's contents. In the unlikely event that any parts are missing, please contact Flowmaster Technical Support for replacements. (866) 464-6553



Vehicle Compatibility

Model Year: 1994-1995 (With 2 bolt flange at Catalytic Converter)

Make: Chevrolet/GMC

Model: Silverado/ Sierra 1500 / 2500 LD / 2 & 4WD

Single Cab Short Bed, Single Cab Long Bed

Ext Cab Short Bed, Ext Cab Long Bed

Engine: 5.7L V8

- * Will not work with 2500 HD CHASSIS
- * Will not work with Slip Fit Catalytic Converters
- Tail pipes will fit up to 265/70-16 spare tire

BEFORE STARTING:

Raise the vehicle to a minimum of eighteen inches. A floor hoist is ideal. If no hoist is available, we strongly urge the use of axle stands as a safety measure. **Please read and understand these instructions and disclaimer in their entirety before attempting installation.**

CAUTION! WORK ONLY ON A LEVEL SURFACE. USE JACKS /JACK STANDS OF SUFFICIENT CAPACITY TO LIFT AND SUPPORT YOUR VEHICLE. NEVER WORK UNDER A VEHICLE SUPPORTED BY A FLOOR OR BUMPER JACK.

Removing the OEM Exhaust

NOTE: Cutting factory exhaust is necessary in some applications. Please read and follow all instructions before attempting to install this exhaust system.

1. Apply penetrating oil to each rubber hanger on the exhaust.
2. Support the exhaust assembly before making cuts.
3. Cut the factory tail pipe(s) just after the muffler.
4. Remove tail pipe(s) from the vehicle.
5. Remove the (x2) 15mm nuts at the catalytic converter Flange . **Fig.1**
6. Remove the muffler and inlet pipe from the catalytic converter.
7. Remove the OEM tail pipe frame hanger from the frame rail behind the rear tire. It will not be used.

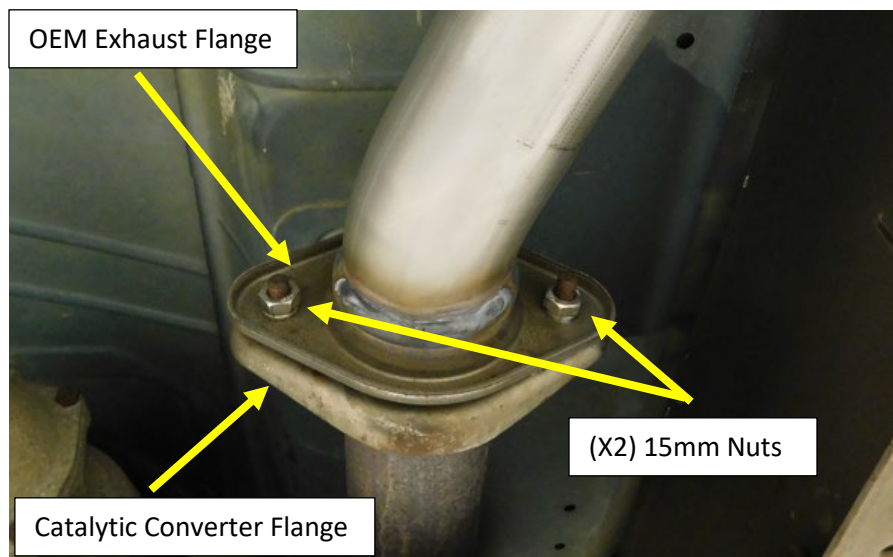


Figure.1

Install your Flowmaster Exhaust System



Before installing clamps in the following steps, remove their nuts, apply anti-seize compound to the bolt threads, and re-install the nuts.

Important: If trimming Muffler extension pipe is required, Measure from the expanded and notched end of the tube . **Figure.2**

Muffler Inlet and Extension Pipe Reference

Wheelbase	Body Style	Bed Length	Muffler Inlet Pipe Configuration	Extension pipe length AFTER TRIMMING
117.5"	Single cab	6.5'	26980M (2) Short Inlet pipe	No Extension
131.5"	Single Cab	8'	26980M (2) Short Inlet pipe + extension	17"
141.5"	Ext Cab	6.5'	26976S (1) Long Inlet pipe + extension	13.5"
155.5"	Ext Cab	8'	26976S (1) Long Inlet pipe + extension	27.5" No trim required

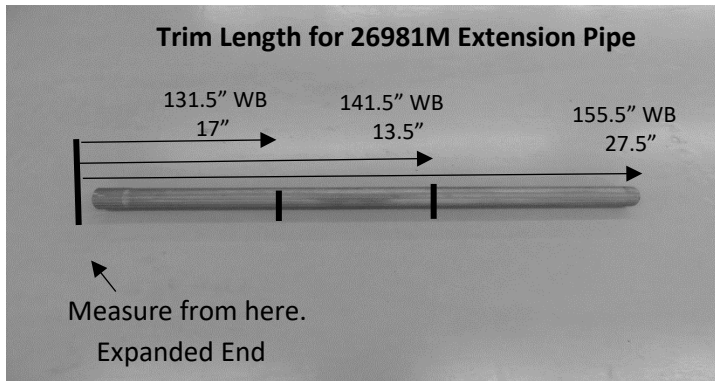
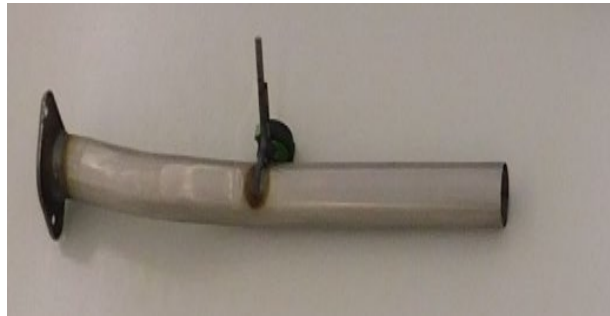


Figure.2

26979M Long Muffler Inlet Pipe



26980M Short Muffler Inlet Pipe



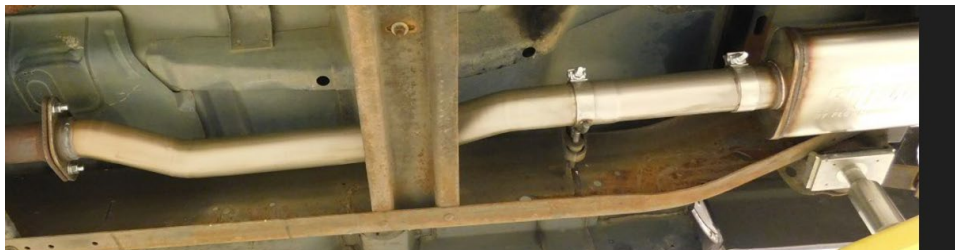
Installation Continued

Important: Is your catalytic converter resting on the crossmember??

- **Recommended:** Replace the transmission mount and donut gaskets between the exhaust manifolds and down pipe with quality replacement parts prior to the installation of this exhaust. This will prevent leaks at the manifold and rattles from the catalytic converter contacting the transmission cross member due to aging and worn parts.
1. Install the correct inlet and extension pipe and clamp hanger configuration (if require) for your application.

Ref Parts List Page.1 and Extension pipe reference chart Page.3

- 117.5" WB-** Install the **26980M** inlet pipe on to the 2-bolt flange of the catalytic converter.
Install the frame hanger rod into the isolator of the factory frame hanger.
- 131.5" WB-** Install the **26980M** inlet pipe on to the 2-bolt flange of the catalytic converter.
Install the **547HA** Muffler Clamp Hanger on to the expanded end of the 17" extension pipe. Install the extension pipe on to the muffler inlet pipe, install the hanger rod into the factory frame hanger isolator and tighten the clamp.
- 141.5" WB-** Install the **26979M** inlet pipe on to the 2-bolt flange of the catalytic converter.
Install the **546HA** Clamp hanger on to the muffler inlet pipe.
Install a **13.5"** Extension pipe on to the **26979M** inlet pipe
Install the **546HA** clamp hanger over the expended section of extension pipe and install the hanger rod into the factory isolator on the frame rail, tighten the clamp to allow for adjustment
- 155.5" WB-** Install the **26979M** inlet pipe on to the 2-bolt flange of the catalytic converter.
Install the **546HA** Clamp hanger on to the expanded section of the 27.5" extension pipe.
Install a **27.5"** Extension pipe on to the **26979M** inlet pipe and install the hanger rod into the factory isolator on the frame rail, tighten the clamp.
Install the **547HA** Muffler Clamp hanger on to the extension pipe and into the factory frame hanger Isolator. Do not tighten the clamp until the muffler is installed (Some vehicles may not have this hanger)



141.5" WB shown for reference

Installation Continued

- Install a 3" band Clamp (15) on to the muffler inlet(4). Fig.3
- Install a 2.5" band clamp on to each Outlet of the muffler(23). Fig.3
- Install the 72198-Z Muffler (4) on to the muffler inlet or extension pipe and tighten the 3" band clamp to allow for adjustment. Fig.3
- Install a 2.5" band clamp (23) on to each Outlet of the muffler. Fig.3
- Install the 72198-Z Muffler (4) on to the extension pipe Fig.3. Tighten the clamp to allow for adjustment.

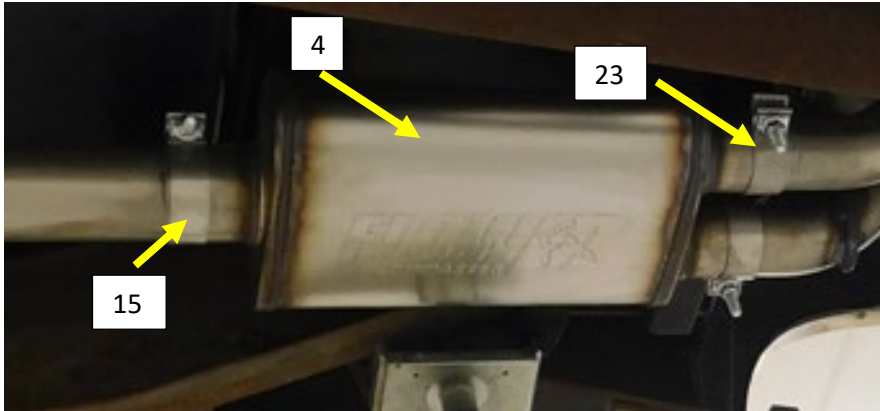


Figure.3

2. Install the supplied tail pipe frame hangers 166HA (13) Right and Left on to the frame rails just behind the rear tire using the existing holes in the frame and Supplied 3/8 hardware. Install the supplied red rubber Isolators (14). Fig.4, Fig.5

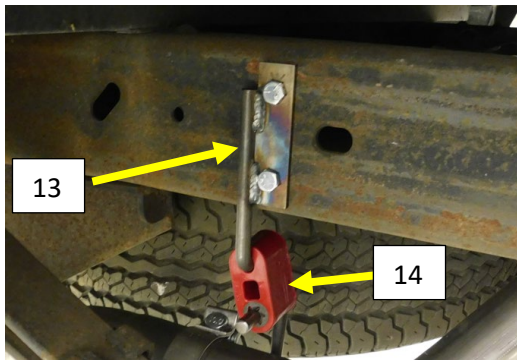


Figure.4

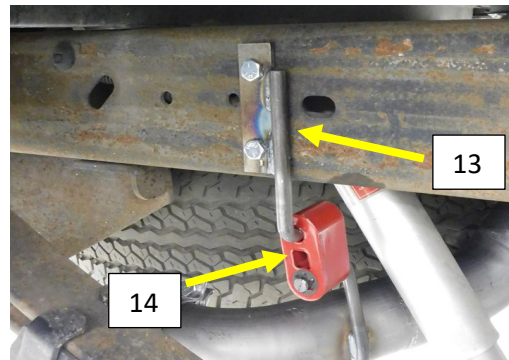


Figure.5

Installation Continued

3. Insert the Right Muffler outlet pipe (5) into the muffler Fig.6.
4. Install the hanger rod into the factory isolator over the muffler. Fig.7
5. Tighten the clamp to allow for adjustment. Adjust the pipe for 1" to 1.5" clearance on the shock. Tighten the clamp.
6. Install the left muffler outlet pipe (7) into the muffler. Rotate the pipe up to within ¼" of the right muffler outlet pipe and tighten the clamp. Fig.6

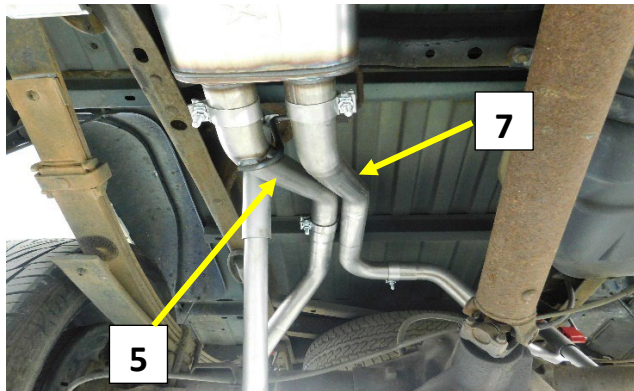


Figure. 6

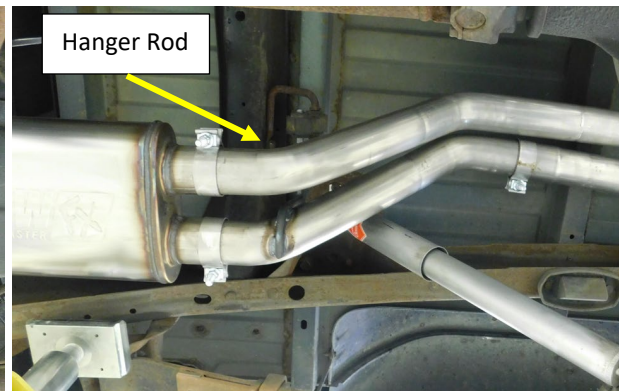


Figure.

7. Install a 2.5" band clamp (23) on to each of the right (6) and left (8) tail pipe expanded ends. Fig.8/9
8. Install the right tail pipe (6) expanded end on to the right muffler outlet pipe (5) over the axel. Insert the tail pipe hanger rod into the red hanger (14) at the rear frame hangers. Tighten the clamps to allow for adjustment. Fig.8/9
9. Install the left tail pipe (8) on to the left muffler outlet pipe directly over the differential. Insert the tail pipe hanger rod into the red hanger at the rear frame hanger. Tighten the clamp to allow for adjustment. Adjust the tail pipe for approximately 3/8" clearance at the left shock if the vehicle is on a 2-post lift with the wheels at full extension. Adjust for 1" clearance if the tires are on the ground or 4 post lift and the vehicle is at ride height. Fig.9

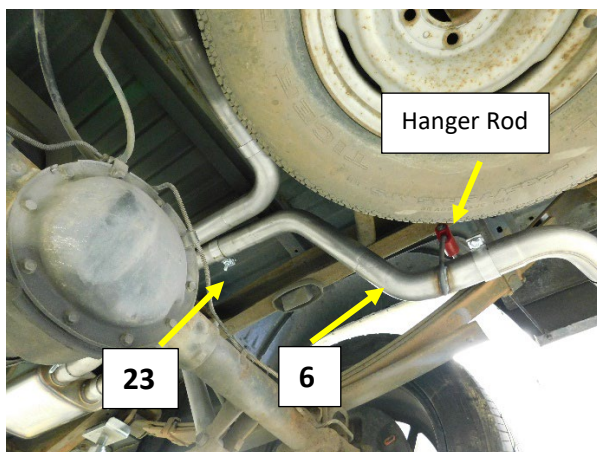


Figure.8

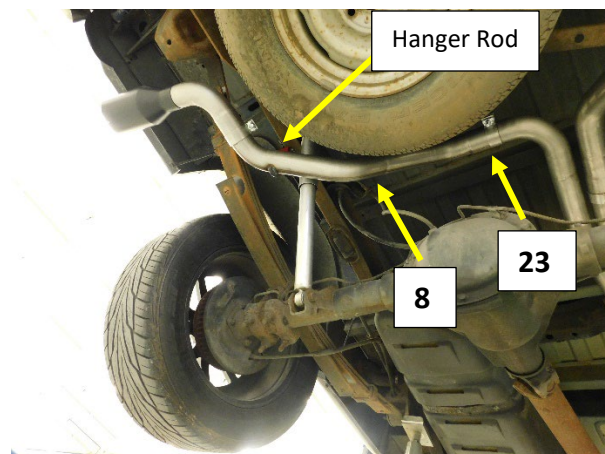
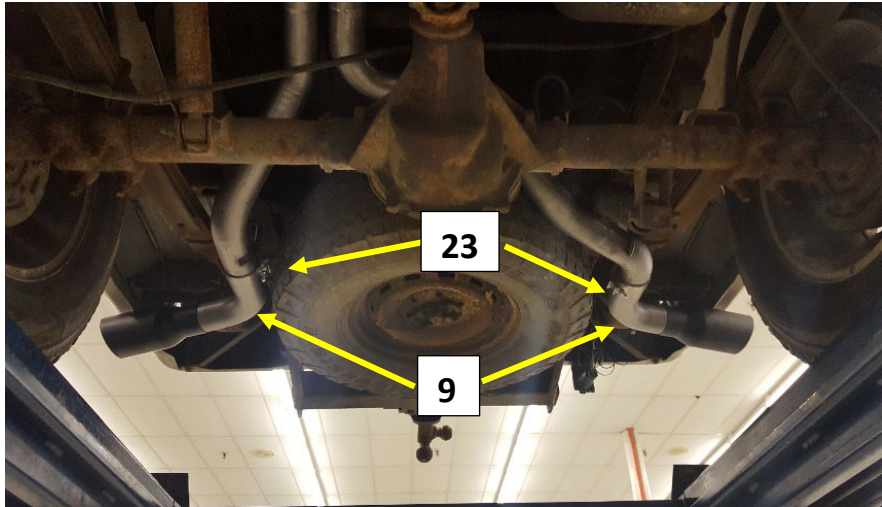


Figure.9

Installing the Tail Pipe Extensions and Tips

10. Install the **86782M** side exit pipes (**9**) on to the left and right tail pipes. Install a 2.5" band clamp (**23**) on to the pipes with the bolt at the top and the nut facing the inside. Tighten the clamp to allow for adjustment. **Fig.9**
11. Install the supplied tip and adjust to personal preference before tightening the clamps. **Fig.9**



12. Align and adjust the system for best fit and component clearance starting at the front and working your way to the rear. Tighten the band clamps and all hardware as you go. Readjusting of components may be necessary after the first pass through the system.
13. Install the supplied push clips (**20**) (**21**) on to the hanger rods after all adjustments, this will prevent the system from moving after adjustment.



Enjoy Your Flowmaster Exhaust!

