



## Installation Instructions

# 718155

### Direct Fit Muffler

### 2020-2026 GM 2500/3500 HD

### 6.6L GAS Engine

### All wheel Bases

Installation requires moderate mechanical skill. If this job is beyond your abilities, seek the services of a qualified technician.

If you do not understand any part of these instructions, please call Flowmaster Technical Support at (866) 464-6553 for assistance.

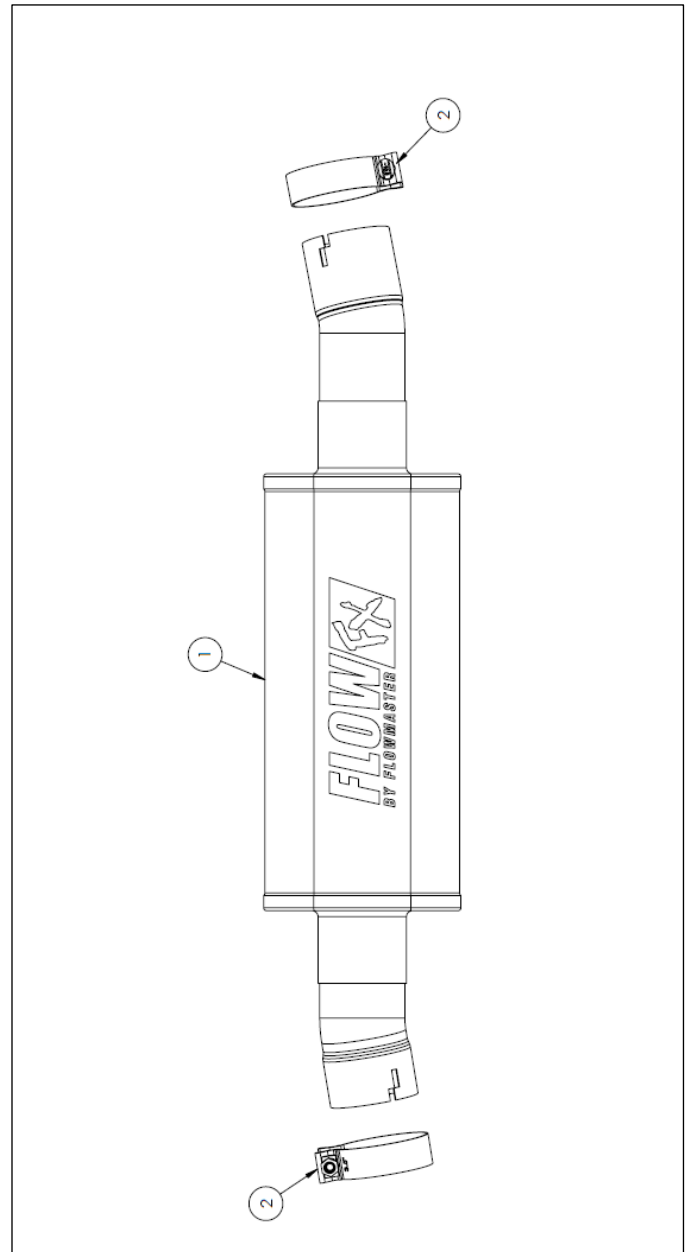
Apply penetrating oil generously to clamps, fasteners, pipes, and hanger rods for ease of disassembly.

#### REVIEW THE INSTRUCTIONS & VERIFY THE KIT CONTENTS

Take a moment to read and understand these instructions before installing your Flowmaster exhaust kit.

ITM#	Part #	Description	Qty.
1	74151-630	Direct Fit Muffler Assembly	1
2	MC350BS	3.5" Band Clamp	2

Use the parts drawing and list to identify components and verify your kit's contents. In the unlikely event that any parts are missing, please contact Flowmaster Technical Support for replacements.



## Vehicle Compatibility

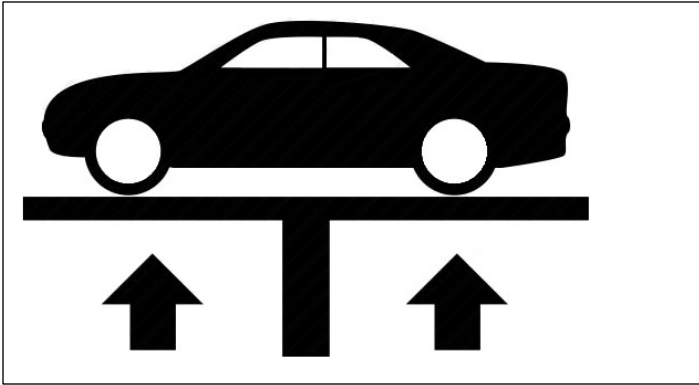
Model Year: 2020-2026

Make: GM

Model: 2500/3500 HD

Engine: 6.6L GAS

- All Wheel Bases



### BEFORE STARTING:

Raise the vehicle to a minimum of 12 inches. A floor hoist is ideal. If no hoist is available, we strongly urge the use of axle stands as a safety measure. **Please read and understand these instructions and disclaimer in their entirety before attempting installation.**

**CAUTION! WORK ONLY ON A LEVEL SURFACE. USE JACKS /JACK STANDS OF SUFFICIENT CAPACITY TO LIFT AND SUPPORT YOUR VEHICLE. NEVER WORK UNDER A VEHICLE SUPPORTED BY A FLOOR OR BUMPER JACK**

### Removing the OEM Muffler and Tail pipe assembly- Fig.1

**Note:** Removing the exhaust assembly from the truck has proven to be the most accurate way to cut the muffler from the piping. The cut on the tail pipe at the muffler being the most critical. Getting the saw blade to track square along the weld is much easier with the exhaust outside the vehicle, working from the top of the muffler.

1. Apply penetrating oil to each rubber exhaust Hanger.
2. Remove the spare tire and heat shield
3. Remove the (x2) 15mm nuts at the muffler inlet pipe flange. **Fig.1**
4. **Support the exhaust front and rear**
5. Remove the exhaust hanger isolators
6. Remove the entire exhaust by dropping the front pipe as you snake the tail pipe out over the rear axle.

**Attention:** Have a second person available to help remove the exhaust from the vehicle and take care not to damage brake lines or the drive shaft as you remove the exhaust.



Figure.1

## Removing the factory muffler from the OEM exhaust.

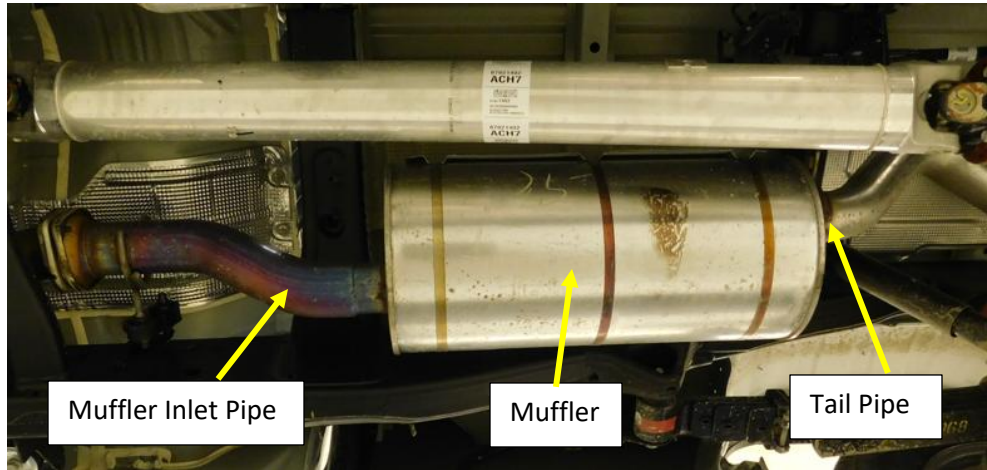


Figure. 2

1. Cut the muffler Inlet pipe leaving the step down as shown in **Fig.3** and **Fig.4**
2. Cut the tailpipe as close to the weld as possible as shown in **Fig.5** and **Fig.6**
3. Deburr the inside and outside of the muffler inlet pipe and tail pipe.

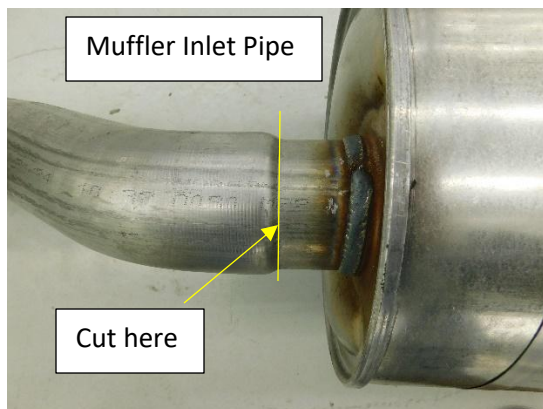


Figure.3

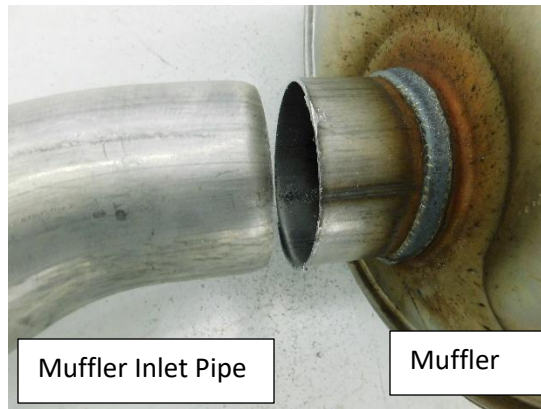


Figure.4

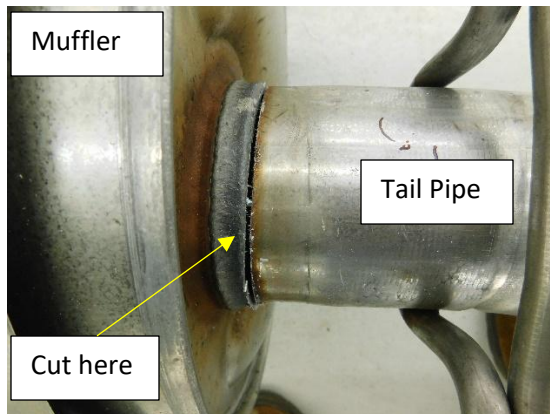


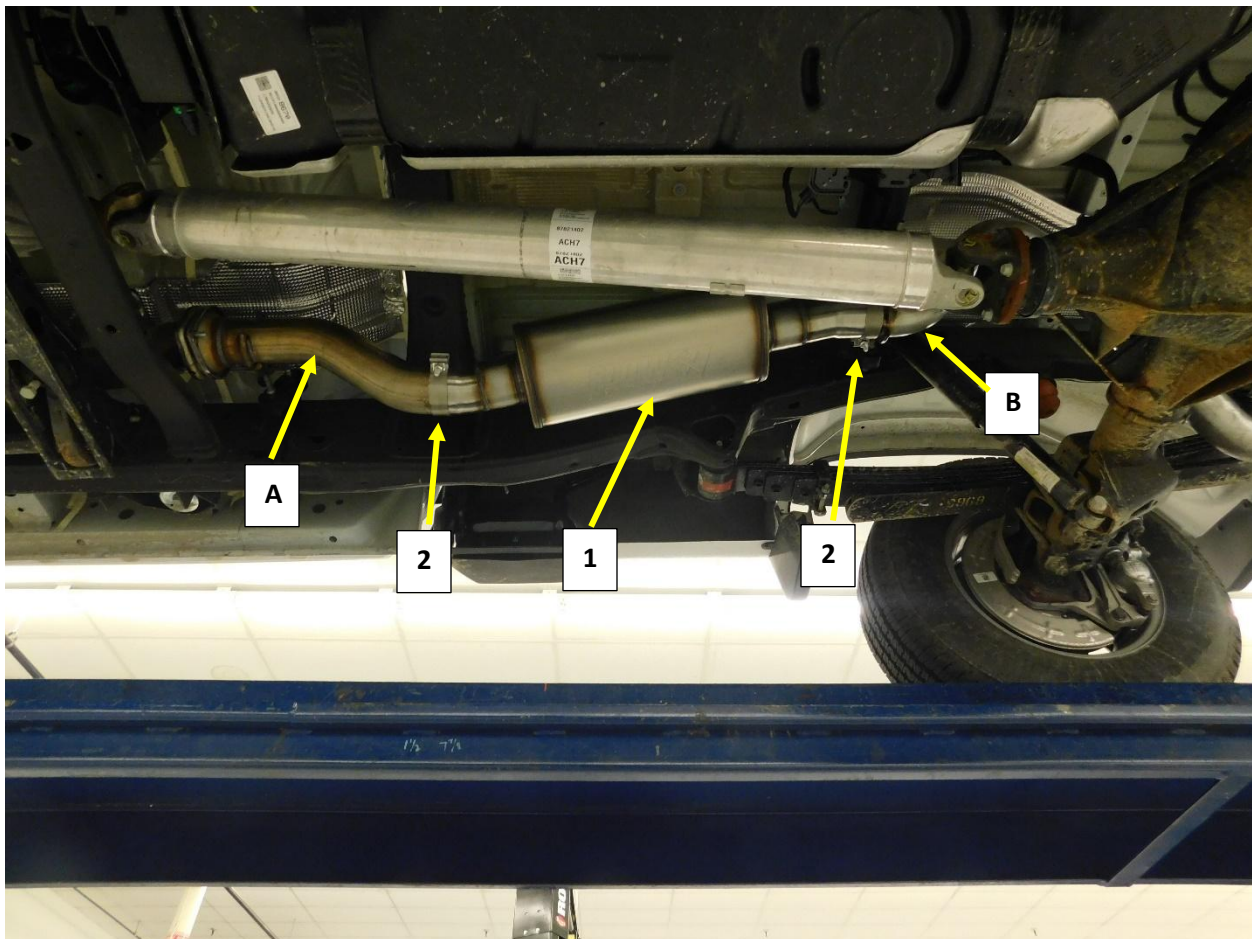
Figure.5



Figure.6

## Installing 718155 Direct Fit Muffler

1. Re install the OEM Muffler Inlet pipe **(A)** using the OEM hardware.
2. Install a 3.5" band clamp **(2)** on to the expanded and notched Muffler inlet (Short Pipe) of the Flowmaster Direct Fit Muffler **(1)**.
3. Install the Muffler assembly **(1)** on to the Inlet Pipe **(A)**. **\*Support the muffler assembly**
4. Install a 3.5" band clamp **(2)** onto the expanded and notched muffler outlet pipe.
5. Install the OEM Tail pipe **(B)** over the axle from the rear. Install the tail pipe into the Muffler outlet.
6. Install the hanger isolators at the muffler then the tail pipe hanger at the rear of the frame rail.
7. Align the muffler for best fit and alignment and tighten the clamps.
8. Recheck all connections and clamps starting at the front and working to the rear. Realigning if required



# Enjoy Your Flowmaster Exhaust!

